

Roller Grille

12.7mm Aluminium tubes

ECONOMICAL, LIGHTWEIGHT AND STRONG

Anvil Industrial Doors Roller Grilles made from high grade aluminium are available in anodised and powder coated finishes. They secure both small and large openings.

They have opening sizes of 4.0m high x 3.6m wide and are constructed of 12.7mm aluminium tubes. They are ideally suited for arcade entrances, shops, car parks, ventilation security. Allowing maximum airflow and visibility without sacrificing strength and security.

REQUEST A QUOTE



Anvil Industrial Doors
 85 Christable Way, Landsdale,
 Western Australia, 6065
 PO Box 1767, Wangara WA 6947
 Phone: (08) 9302 3355
 Fax: (08) 9302 3399



Specifications

CURTAIN:

12mm Grille is constructed of 12.7mm aluminium tubes at 60mm centres, connected with 77 x 25mm aluminium links spaced at 300mm centres to form a brick pattern.

SIDE GUIDE

50mm x 33mm extruded aluminium with schlecal nylofelt buffer for quiet operation.

BOTTOM RAIL

90mm x 48mm extruded aluminium section incorporating locking device and concealed locking rods and optional PVC buffer.

BRACKETS

Manufactured from 90mm x 40mm mild steel.

LOCKING

Shall be centrally mounted, two way Mortice Key Lock or sliding shoot bolt locking mounted within the bottom rail. Optional waist high locking is also available.

OPERATION

Designed for manual hand operation as standard, dependant on size, chain & motorisation is optional as requested or required.

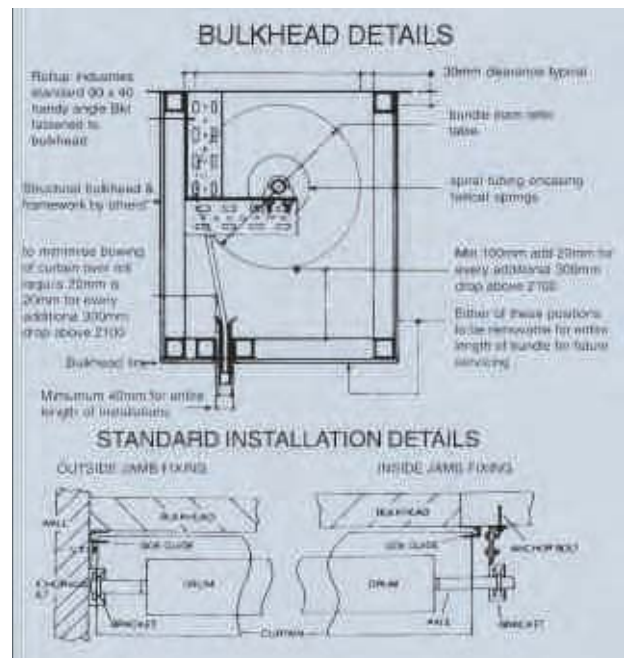
FINISH

Available in anodised & powder coated colours.



Bundle diameters for 12 ROLLER GRILLES

Drop	1200	1500	1800	2100	2400	2700	3000	3300	3600
150mm Drum 12mm	285	285	285	305	310	310	335	345	345
229mm Drum 12mm	300	310	320	330	340	360	370	390	415





NOTES

A series of horizontal dotted lines for writing notes.